

Steel Magazine Racks



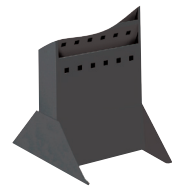
4322BL



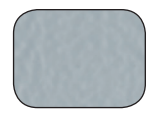
4321BL



4310BL



4323BL Base



Gray
GR



Black
BL

- durable steel construction
- powder coat finish for durability
- mounts to a wall or stands on floor with steel base
- wall mounting hardware included



Model	Description	W x D x H	Ship Weight
4310	5 Pockets	10 x 4 x 20½"	9 lbs.
4321	11 Pockets	10 x 4 x 36¼"	15 lbs.
4322	23 Pockets	10 x 4 x 65½"	28 lbs.
4323	Steel Base	10 x 14 x 5¼"	3 lb.